

Alliance For Housing –  
Oakland County's Continuum of Care  
2013 Annual State of Homelessness Supplemental  
Report



June 2014

## **Contents**

Point In Time/Housing Inventory Chart.....Page 3

Emergency Solutions Grant .....Page 6

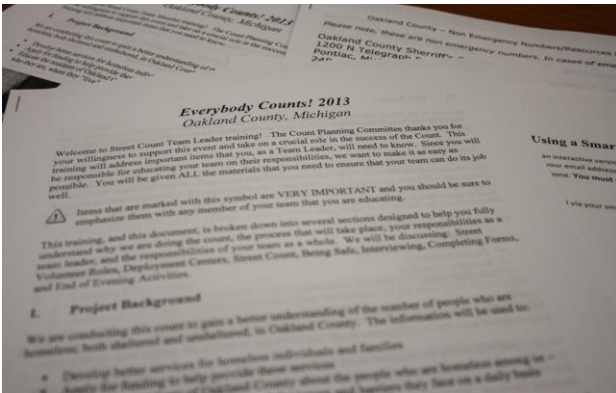
Annual Homeless Assessment Report .....Page 7

## POINT IN TIME – 2014 Sheltered and Unsheltered Count

Each year HUD requires Continuum of Care (CoC) across the country to count the number of homeless people staying in emergency shelters, transitional housing, or SAFE Havens. This “snapshot” is called the Point in Time (PIT) and takes place on one night during the last ten days of January. CoC’s are also required to count the number of unsheltered people living in a place not meant for human habitation such as the street, a car, or an abandoned building biennially..

In addition to the Point in Time count, HUD requires CoC’s to complete a “Housing Inventory Chart (HIC)”. The HIC is a snapshot of a CoC’s housing inventory on a single night during the last ten days in January. It should reflect the number of beds and units available on the night designated for the count that are **dedicated to serve people who are homeless**. Beds and units included on the HIC are considered part of the CoC homeless system.

Oakland County conducted the Point in Time (PIT) count on Wednesday, January 29, 2014 using the guidance provided by HUD as documented in “A guide to counting sheltered homeless”. The data was collected three ways. To capture the street count number, nearly 100 volunteers (from organizations and homeless ambassadors) canvassed mapped areas within the county and counted people on the street. Each volunteer received training on how to complete the data entry form through interviews and visual sightings. This year, the mapping committee



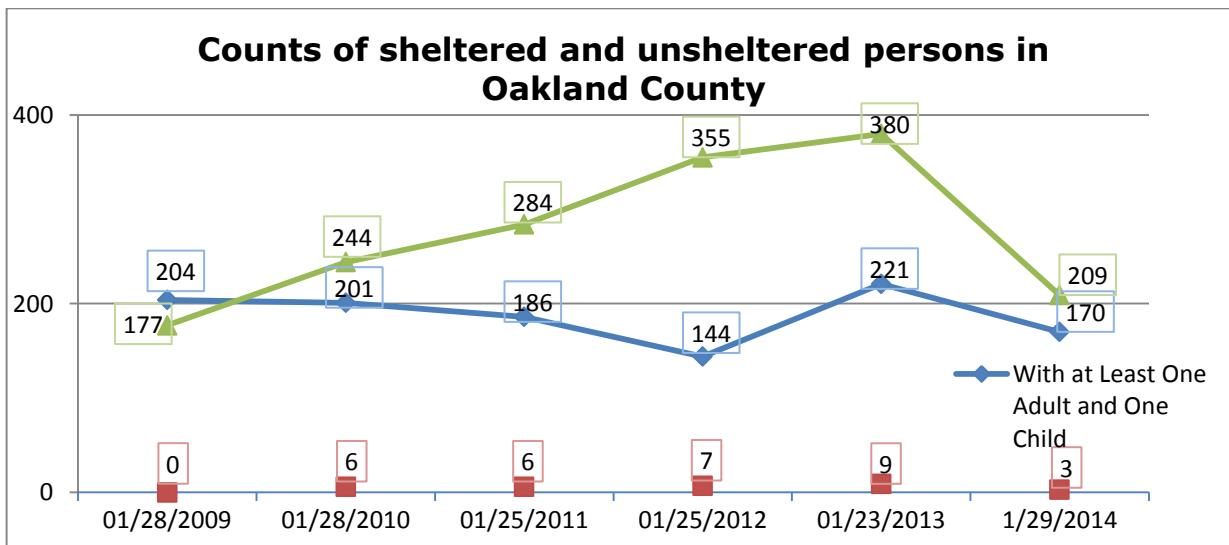
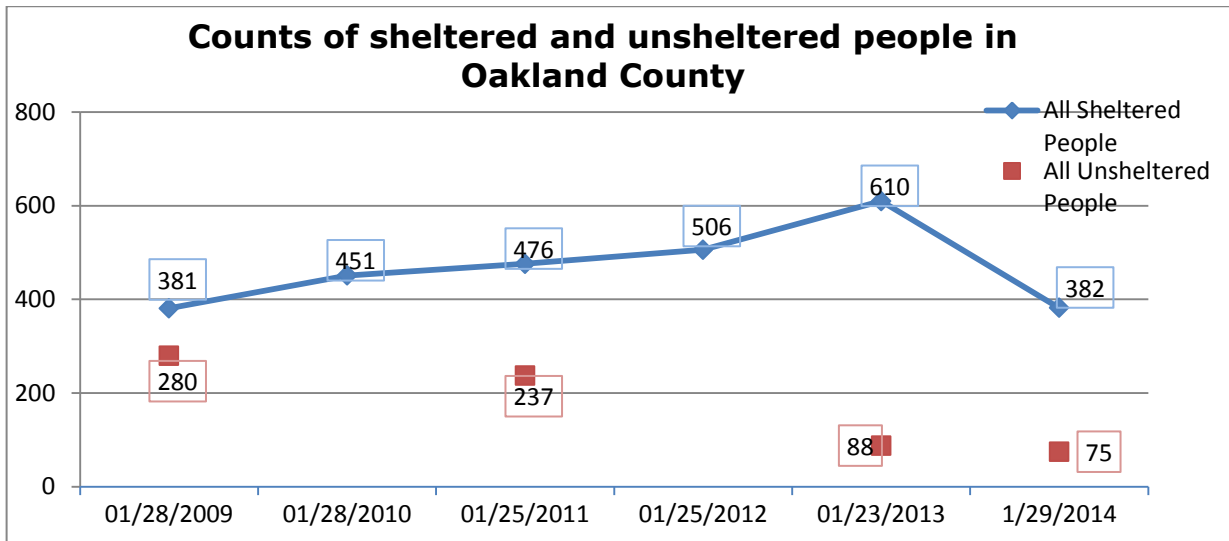
used technology to provide maps on cell phones of volunteers. Secondly, to capture the number of people residing in shelters and transitional housing programs, HMIS participating agencies entered a service transaction for all people receiving shelter services on the night of January 29<sup>th</sup>, and finally, the organizations not participating in HMIS completed a data collection form provided to them and returned that form to the System Administrator so data could be used for the county wide count.

The organizations providing data:

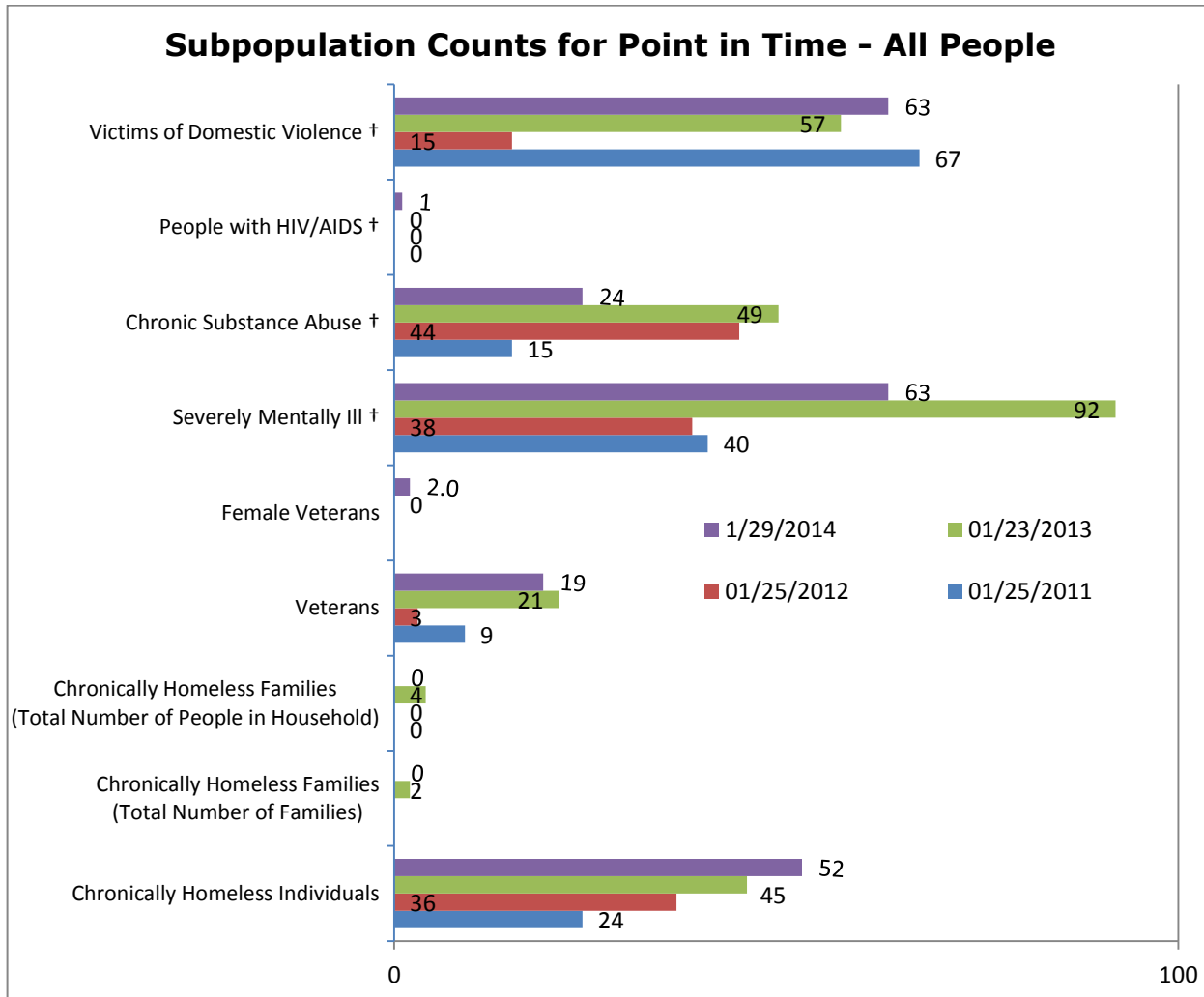


**POINT IN TIME (cont'd)**

- On the night of January 29, 2014 there were 382 people experiencing homelessness staying in a shelter (graph below).
- Seasonal shelters were over capacity – a trend over the past few years.
- There were 75 people experiencing homelessness counted on the street during the unsheltered streetcount. This was a decrease of 13 people from the 2013 street count number of 88.



POINT IN TIME (cont'd)



## EMERGENCY SOLUTIONS GRANT (ESG)

- In support of the Campaign to End Homelessness in Michigan and incorporating the HEARTH Act regulations, MSHDA and Oakland County Government funded the Emergency Solutions Grant in 2013. The ESG sharing partners use the funds to:
  - foster better understanding and coordination for more efficient use of resources
  - rapidly re-house households, while continuing prevention activities, in order to:
    - prevent involuntary family separation (denying admission to family based on the age of any child under 18) and
    - stabilize individuals and families in their current housing or quickly move them into permanent housing.
- Street outreach teams are hard at work linking homeless persons on the street to affordable housing opportunities and with the services they need.
- The ESG partners include Community Housing Network and South Oakland Shelter:

## Services Provided

- The Housing Resource Center answered 16,650 community inquiries
- Approximately 1,000 people were screened for ESG program services
- Approximately 700 were admitted for program services
  - Approximately 500 homeless persons/households received either case management, rental assistance, security deposit, or utility arrearage assistance
  - Approximately 200 persons/households received short term rental assistance to remain stable in their housing

## ANNUAL HOMELESS ASSESSMENT REPORT (AHAR)

- The 9<sup>th</sup> Annual Homeless Assessment Report (AHAR) represents data on homelessness in the U.S. It responds to a congressional directive that the Department of Housing and Urban Development (HUD) provides an annual report to Congress on the extent and nature of homelessness.
- The AHAR uses aggregate HMIS data from communities across the country, as well as information from CoC applications, to produce a national report on homelessness to the U.S. Congress. The AHAR is designed to:
  - Develop an estimate of the number of homeless people nationwide;
    - Estimate the number of persons receiving assistance in permanent supportive housing (PSH) and create a descriptive profile of homeless people and people in PSH;
    - Understand service use patterns; and,
    - Estimate the nation’s capacity to house homeless people.
- The AHAR is based on an unduplicated count of people within each community, and focuses on people who use emergency shelters, transitional housing programs and/or permanent supportive housing. The AHAR does not account for homeless people who only use a supportive service program, or are service resistant and do not access any type of homeless residential program during the study period.
- The AHAR is based largely on the universal data elements in HUD’s HMIS Data and Technical Standards. All HMIS data is reported in the aggregate to the research team. At present, the data represents any person who enters an emergency shelter, transitional housing program and/or permanent supportive housing during a 12-month reporting period, from October 1 to September 30 of the following year.
- Data is reported separately for individuals and people in families in these program types.
- The AHAR also includes information from annual CoC Exhibit 1 applications. Point-in-Time (PIT) counts of homeless populations offer a “snapshot” of homelessness on a single night in January and include estimates of the unsheltered homeless population. The annual PIT count also provides information on the numbers of homeless people within particular subpopulations, such as people who are chronically homeless, severely mentally ill, substance abusers, veterans, unaccompanied youth, or living with HIV/AIDS.
- Continuums of Care (CoC) are scored on AHAR participation in the annual renewal funding round.
- Data was used from the following organizations:



## ANNUAL HOMELESS ASSESSMENT REPORT (AHAR) Cont'd

Report is broken up into seven different shells for all county and veterans AHAR:

Emergency Shelter Family
Emergency Shelter Individual
Transitional Housing Family
Transitional Housing Individual
Permanent Support Housing Family
Permanent Support Housing Individual
Summary

During the 2012/2013 AHAR time period, over 50% of individuals and families seeking services were homeless before entering a program. You will note the increase in the number of permanent supportive housing beds over the past four years. The additional beds became available to the community through the yearly funding round as a result of the continued success of the COC and the score received from HUD. These beds provide a housing opportunity for people experiencing homelessness in our community. 81% of people/families exiting permanent housing discharged into a positive housing destination (rental by client) thereby ending the homeless episode.

### AHAR Counts of People Served by Reporting Category

Reporting Category	2008	2009	2010†	2011	2012	2013
Individuals in Emergency Shelter	909	521	716	551	629	614
Individuals in Transitional Housing	*	434	399	378	200	109
Individuals in Permanent Supportive Housing	*	*	338	361	312	348
Families in Emergency Shelter	394	233	205	99	98	94
Families in Transitional Housing	176	237	230	249	239	227
Families in Permanent Supportive Housing	*	*	184	276	283	360

† First year PSH data included in AHAR. \*No data entered for this year or status is not Confirmed and Usable.

### AHAR Counts of People Served on an Average Night

Reporting Category	2008	2009	2010†	2011	2012	2013
Individuals in Emergency Shelter	141%	55%	76%	100%	100%	82%
Individuals in Transitional Housing	*	116%	100%	97%	100%	74%
Individuals in Permanent Supportive Housing	*	*	86%	97%	100%	100%
Families in Emergency Shelter	98%	56%	71%	100%	100%	88%
Families in Transitional Housing	106%	87%	84%	88%	100%	91%
Families in Permanent Supportive Housing	*	*	73%	87%	100%	100%